

WEST BOUNDARY COMMUNITY FOREST ANNUAL REPORT



Healthy Forests.
Healthy Communities.

Building Community Through Sustainable Forest Management

We are proud to highlight the work of West Boundary Community Forest (WBCF) over the past year and our continued commitment to **responsible forest stewardship**, **local decision-making**, community investment, and forest education.

By prioritizing **wildfire risk reduction** projects that help protect our rural communities, the **preservation and enhancement of wildlife habitat**, expanded **recreational opportunities**, support for local initiatives through **grants and dividends**, and investment in students through **forest education and bursaries**,

the West Boundary Community Forest balances **environmental sustainability** with meaningful **economic and social benefits** for the communities we serve.



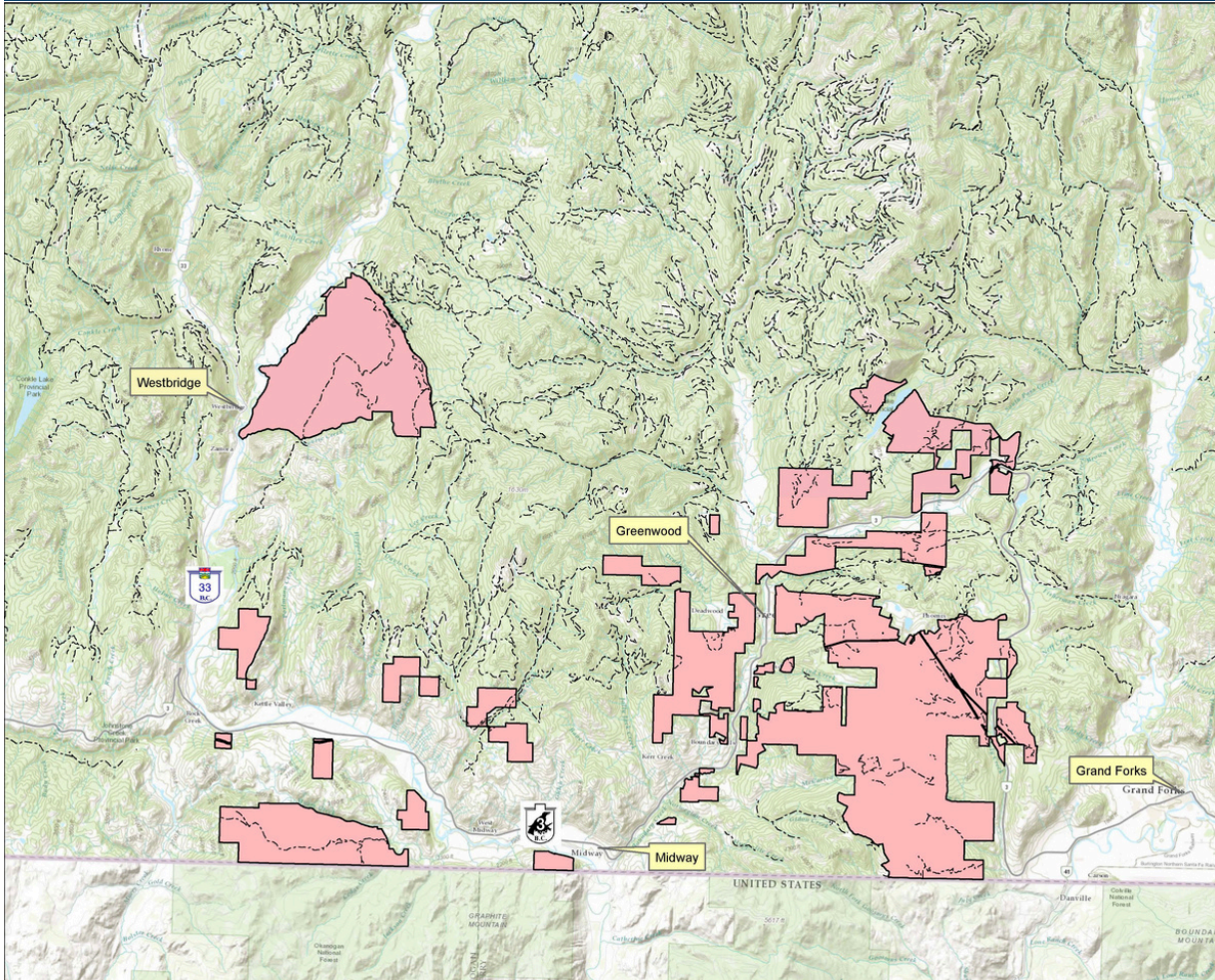
West Boundary Community Forest Inc.
(WBCF) is jointly owned by the
Village of Midway and City of
Greenwood.

Osoyoos Indian Band manages WBCF.



Osoyoos Indian Band

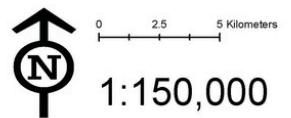
West Boundary Community Forest Overview Location Map



West Boundary Community Forest Overview Location Map

Legend

- West Boundary CF Parcels
- Roads



Osoyoos Indian Band

Coordinate System: WGS 1984 UTM Zone 11N
Projection: Transverse Mercator
Datum: WGS 1984
False Easting: 500,000.0000
False Northing: 0.0000
Central Meridian: -117.0000
Scale Factor: 0.9996
Latitude Of Origin: 0.0000
Units: Meter

Author: E. Beavan

WBCF Board of Directors

From Left: Directors,
Heinz Kruezer, Darrin
Metcalf, Alyssa Milne,
Ginette Wheeler, and
Board Chair, John Bolt.



Our Forest

A Film From



www.WestBoundaryCommunityForest.com

WBCF Launches New Short Film

We're excited to share our new short film, "Our Forest", showcasing the values, objectives, and diverse activities happening in our locally managed forest. From sustainable forestry practices to community education, this short film highlights the many ways our community forest creates benefits close to home.

Visit our website to view the film and learn more about WBCF.

WBCF
at a
Glance

17,761
Hectares
in
overall size

23,000 m³
Annual
Allowable Cut

163
Hectares
Treated for
Wildfire Risk
Reduction

Understanding WBCF: Size, Scale, and Capacity

The West Boundary Community Forest (WBCF) was established to provide local control over forest resources while supporting economic, environmental, and community values in the Boundary region of British Columbia. Incorporated in November 2011, WBCF is a corporation jointly owned by the City of Greenwood and the Village of Midway and governed by a board of directors.

The community forest licence covers approximately 17,761 hectares across 21 separate parcels adjacent to private lands, woodlots, TFL 8, the Boundary Timber Supply Area, and municipal lands. Forest operations are managed through a professional contract with the Osoyoos Indian Band.

With an annual allowable cut of 23,000m³ and its first cutting permit approved in June 2015, WBCF reflects a broader provincial movement toward community-based forestry—one that emphasizes First Nations partnerships, local employment, sustainable forest management, and reinvestment of forest revenues into community development and resilience.





Forest Education

It was another successful year teaching forest education to students and teachers at the WBCF Outdoor Education Centre!

We are proud to have hosted over 570 students from all across the Boundary Region and as far away as Osoyoos, BC.

With multiple hiking trails, a pond and lakefront for studying water bugs, an outdoor covered learning shelter, picnic tables, fire pits to gather around, grassy sit-spots for story-time, and acres of forest for shelter-building and nature games, it is an ideal space for students to experience hands-on learning, connect with nature, explore local ecosystems, and take part in engaging, curriculum-linked activities.

Did you know?

- **Field trips** to the Outdoor Education Centre (OEC) **are fully funded by WBCF** and provided free of charge to area schools and community groups.
- **WBCF donated over \$1500 in bus funding** to assist West Boundary area schools to visit the OEC in 2025
- Over **570 students visited the OEC** in 2025





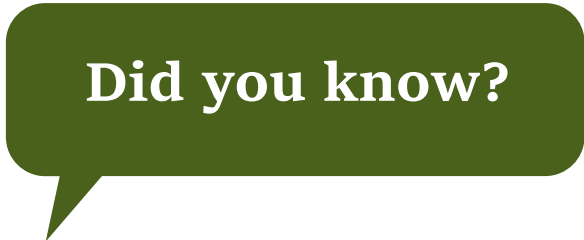
Events and Outreach

WBCF was pleased to once again host a booth at Founder's Day in Greenwood in July and at the Rock Creek Fall Fair in September.

Events are important for WBCF to connect with the public and share directly about our forest operations, teach how community members can FireSmart their properties and help protect their communities, and invite teachers and community groups to come out to a field trip to our Outdoor Education Centre on Wilgress Lake.

Events and outreach are also a great way for WBCF to meet the community members and learn from you about what's important to you about your community forest.

We look forward to adding to our events and outreach this year with a booth at the Village of Midway's Canada Day Celebrations in July.



- **Connecting with community** members is a fundamental value and principle of WBCF
- **Our Facebook page and website** are a great resource for updates
- **Board meetings are open to the public** to attend and ask questions



Grants and Bursaries

A key mandate of WBCF is to award funding to eligible non-profit community groups and societies within the West Boundary region:

- **grants** to eligible non-profit community groups and societies;
- **bursaries** to post-secondary students.



Grant Applications
now available on the website!

WestBoundaryCommunityForest.com

**WBCF
2025**
by the
numbers

\$ 400,000
awarded in
Dividends
to shareholders

\$ 6,000
awarded in
Bursaries to
BCSS and home-school
graduates

\$ 103,400
awarded in
Grants to
West Boundary
area non-profits

Strengthening Community Forestry with the BCCFA

The BC Community Forest Association (BCCFA) plays an important role in advancing community forestry across British Columbia, advocating for stable tenures, improved policy, and stronger local control of forest resources. As the collective voice of community forests, the BCCFA helps rural and First Nations communities manage forests in ways that support local jobs, reduce wildfire risk, protect ecosystems, and reinvest revenues locally.

The West Boundary Community Forest (WBCF) benefits from this collaborative network by sharing best practices, navigating provincial policy changes, and strengthening governance and operations.

Dan Macmaster's seven years of service as a BCCFA Director further deepens this connection, contributing leadership on key initiatives and reinforcing WBCF's commitment to sustainable management, community resilience, and innovation in local forestry.



Pictured right:, Dan Macmaster, WBCF Manager and Susan Mulkey, BCCFA. **Pictured left:** Dan with WBCF board member, Heinz Kruezer, and WBCF Operations Manager, Peter Flett at the annual BCCFA Annual conference and AGM in Nanaimo.



Myers Creek Wildfire Risk Reduction

In 2025 we completed a 10km shaded fuel break wildfire risk reduction treatment along the Myers Creek road. This resulted in over 120 hectares of roadside area thinned out, with reductions of ladder and surface fuels. This project involved multiple local contractors working on treatment implementation, surveying and pile burning over the last few years. In 2026, we will be planting open areas in the treatment with fire-resistant deciduous tree seedlings to increase biodiversity and wildlife values, which maintaining fuel treatment effectiveness.



Lone Star Permit

Post-harvest slash piling was completed to abate the surface fuel hazard associated with a dense cedar understory. Once these piles are burned, the fuel hazard will be reduced and mineral soil is exposed to help improve survival of replanting activities that will occur in 2026 and 2027. effectiveness.





Iron Clad - Willow Wildfire Risk Reduction

A fuel management prescription in the Willow Road and Iron Clad areas was developed in 2025 with the support of the Forest Enhancement Society of BC. This prescription will guide fuel reduction activities in these areas when implementation funding is available. Fuel treatment techniques will include mechanical and manual thinning, pruning, and surface fuel clean-up. These areas were prioritized for treatment based on assessed fuel risks (high and extreme) and proximity to residential areas and essential travel corridors.

Woodlot Purchase

Securing ownership of a woodlot tenure adjacent to the West Boundary Community Forest (WBCF) represents an important strategic milestone that strengthens both local economic resilience and sustainable forest stewardship. In British Columbia, woodlot licences are area-based tenures that grant holders the right to manage and harvest Crown timber within a defined area, while assuming responsibility for long-term forest management, silviculture, and the protection of environmental and social values.



Bringing this woodlot into the West Boundary portfolio expands WBCF's capacity to generate stable employment and timber revenue while supporting diversified work in forest planning, harvesting, reforestation, and value-added wood initiatives for years to come. Its proximity to existing community forest lands improves operational efficiency and further reinforces WBCF's commitment to locally managed forests that deliver long-term benefits to the Boundary region.